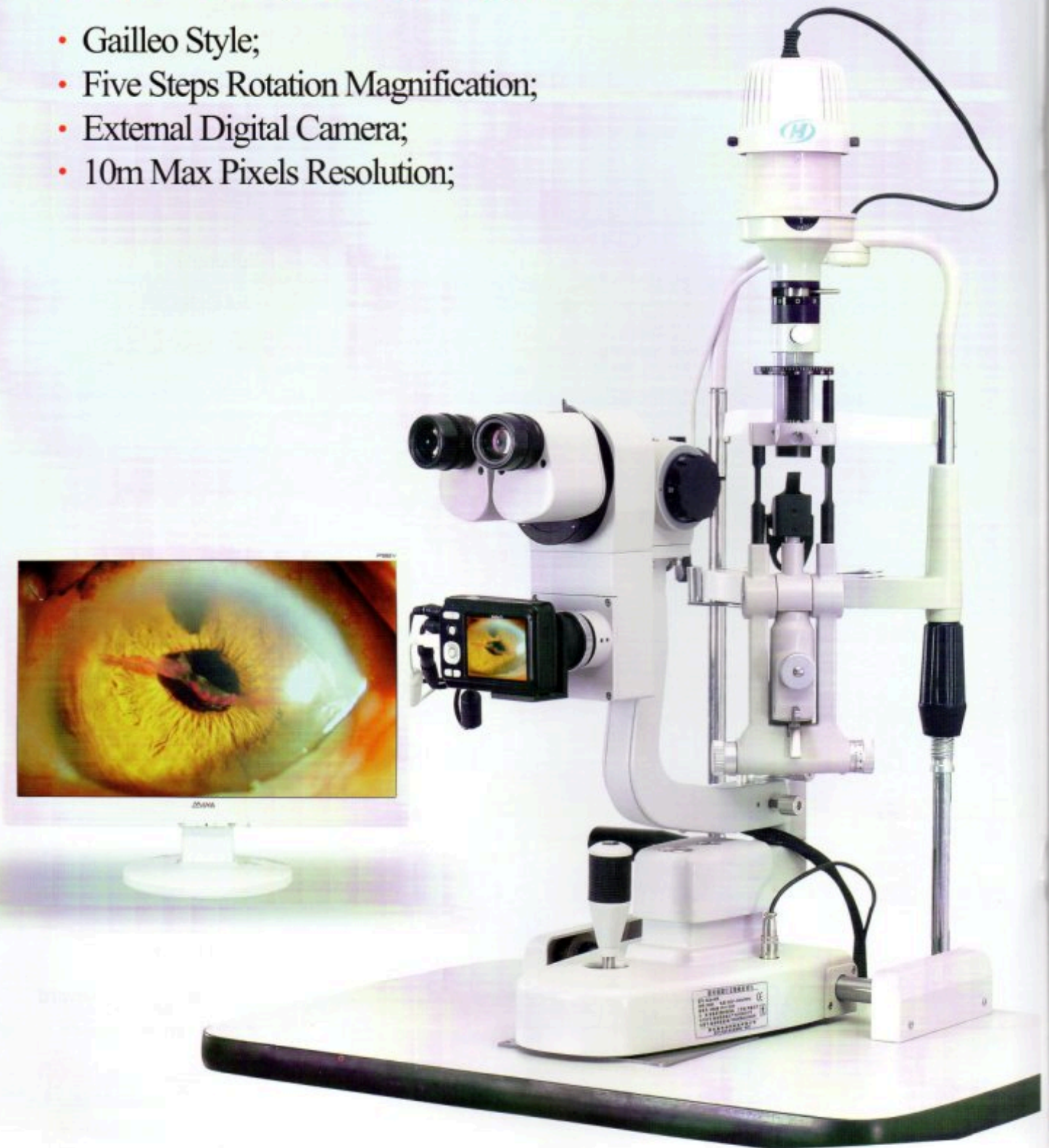


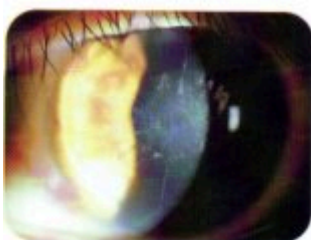
SLM-4ER (Series) Digital Slit Lamp

- Galileo Style;
- Five Steps Rotation Magnification;
- External Digital Camera;
- 10m Max Pixels Resolution;

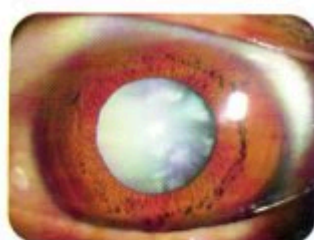


Technical Specification

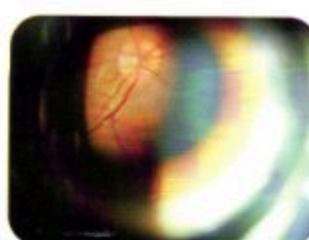
Model	SLM-4ER(Model A)	SLM-4ER(Model B)
Microscope Type	Galileo Parallel	
Digital	External Digital Slit Lamp	
Background Light	No	optional
Magnification Change Way	Drum Five Magnifications	
Eyepiece Magnification	12.5X	
Total Magnifications	6X, 10X, 16X, 25X,40X	
Diopter Adjustment	-5D ~+5D	
Illumination	Five Steps (Step less Optional)	
Slit Width	0-10MM Continuous (0-14MM Optional)	
Slit Height	1-10MM Continuous (1-14MM Optional)	
Slit Angle	0° - 180° Adjustable	
Slit Inclination Angle	5° 10° 15° 20°	
Light Spot Diameter	0.2mm, 2mm, 3mm, 5mm, 8mm, 10mm	
Filter	Heat Absorption; Grey; Redfree; Cobalt Blue	
Fixation	Red LED	
Electrical		
Illumination Bulb	German OSRAM Halogen Tungsten Lamp	
Input Voltage	110V/220V (+ 10%)	
Input Power	60VA	
Diffuse Lens	Yes	
Preset Lens	Yes	
Laser Interface	Optional	
Applanation Tonometer Interface	Yes	
Software system	NO	Image Capture Card
	NO	Professional Image Software



Keratopathy



Cataract



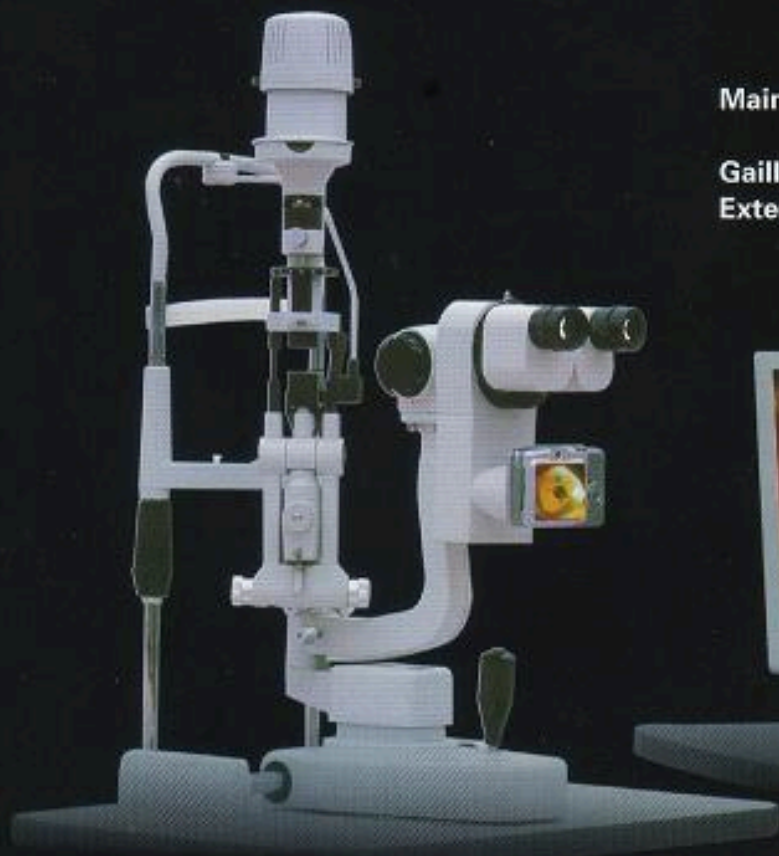
Fundus by Slit Lamp



Pigmentation

KANGHUA

SLM-4 ER Digital Slit Lamp



Main features:

Gaileo style 5 steps rotation magnification
External digital camera



Easy-Taking

Observing from eyepiece now completely available for all magnifications!

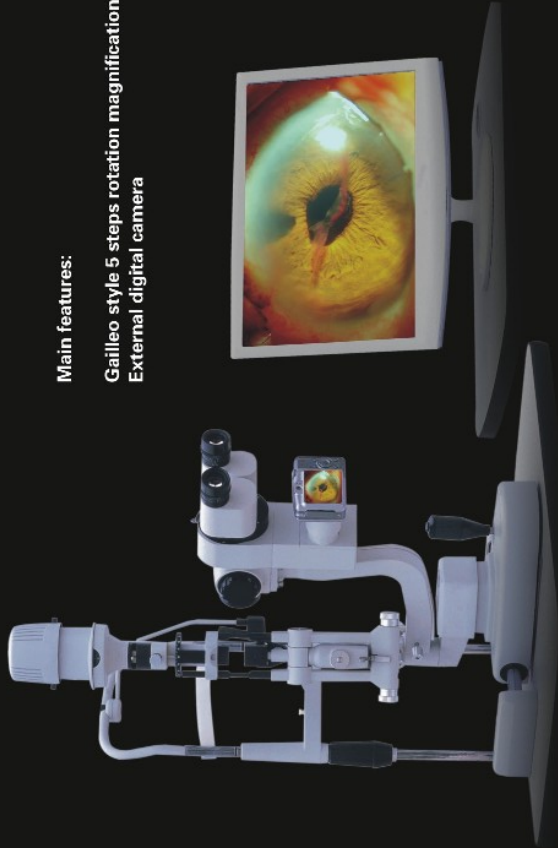
Watch, shoot and win impressive images!



KANGHUA SLIT LAMP

SLM-4_{ER} Digital Slit Lamp

SLM-2_{ER-E} Slit Lamp



Main features:

Galileo style 5 steps rotation magnification
External digital camera



Easy-Taking
Observing from eyepiece now completely
available for all magnifications!

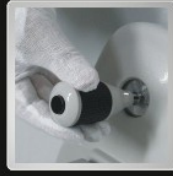
Watch, shoot and win impressive images!



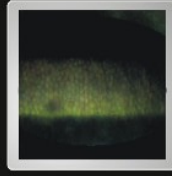
Super optic system



Top definition eyepiece



Touch-C* illumination



Corneal endothelium cells can be observed.